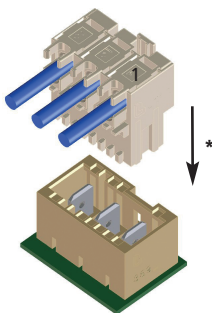
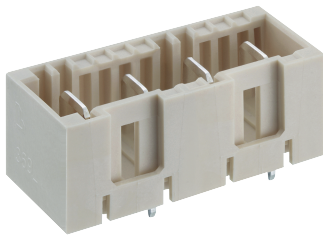
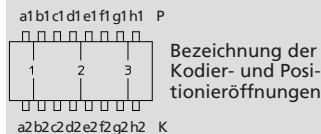


**Kodierungen für RAST-7.5-Power™-Steckverbinder 3741**  
**Keyings for RAST 7.5 Power™ connector 3741**  
**Codages pour connecteur RAST 7.5 Power™ 3741**



**3741**

Für diese Messerleiste schlägt Lumberg die unten dargestellten Kodierungen vor. Weitere Kodierungen sind auf Anfrage möglich.

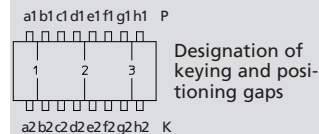


**Steckweise indirekt**, mit RAST-7.5-Power™-Steckverbinder:  
 Kodierung durch Kodiernasen am Steckverbinder und entsprechende Öffnungen an der Messerleiste

Alle Zeichnungen in Steckrichtung (\*) gesehen

**3741**

For this tab header, Lumberg proposes the keyings listed below. Further keyings are possible on request.

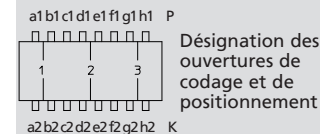


**Indirect connection**, with RAST 7.5 Power™ connector:  
 Keying by means of keying noses at the connector and matching gaps at the tab header

All drawings in view of mating direction (\*)

**3741**

Pour cette réglette à couteaux Lumberg propose les codages ci-dessous. Autres codages sont possibles sur demande.



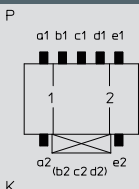
**Connexion indirecte**, avec connecteur RAST 7.5 Power™ :  
 Codage par plots de codage au connecteur et ouvertures correspondantes à la réglette à couteaux

Tous dessins vus dans le sens d'enfichage (\*)

**2**

2-polig  
 2 poles  
 2 pôles

**3741 02 K00**

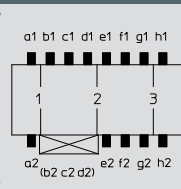


Kodierung/keying/codage:  
 P a1 b1 c1 d1 e1, K a2 e2, V 1/2

**3**

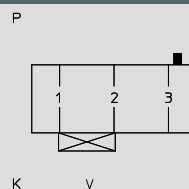
3-polig  
 3 poles  
 3 pôles

**3741 03 K00**



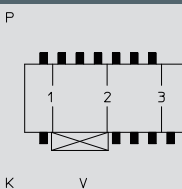
Kodierung/keying/codage:  
 P a1 b1 c1 d1 e1 f1 g1 h1, K a2 e2 f2 g2 h2, V 1/2

**3741 03 K01**



Kodierung/keying/codage:  
 P h1, V 1/2

**3741 03 K02**

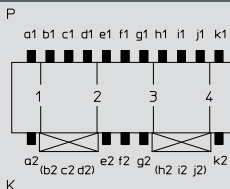


Kodierung/keying/codage:  
 P a1 b1 c1 d1 e1 f1 g1, K a2 e2 f2 g2 h2, V 1/2

**4**

4-polig  
 4 poles  
 4 pôles

**3741 04 K00**

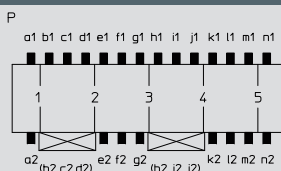


Kodierung/keying/codage:  
 P a1 b1 c1 d1 e1 f1 g1 h1 i1 j1 k1, K a2 e2 f2 g2 k2, V 1/2, 3/4

**5**

5-polig  
 5 poles  
 5 pôles

**3741 05 K00**



Kodierung/keying/codage: P a1 b1 c1 d1 e1 f1 g1 h1 i1 j1 k1 l1 m1 n1, K a2 e2 f2 g2 k2 l2 m2 n2, V 1/2, 3/4